

GHP1-RA

Pompa con cuscinetto per carichi radiali (opzione RA).

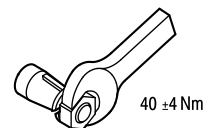
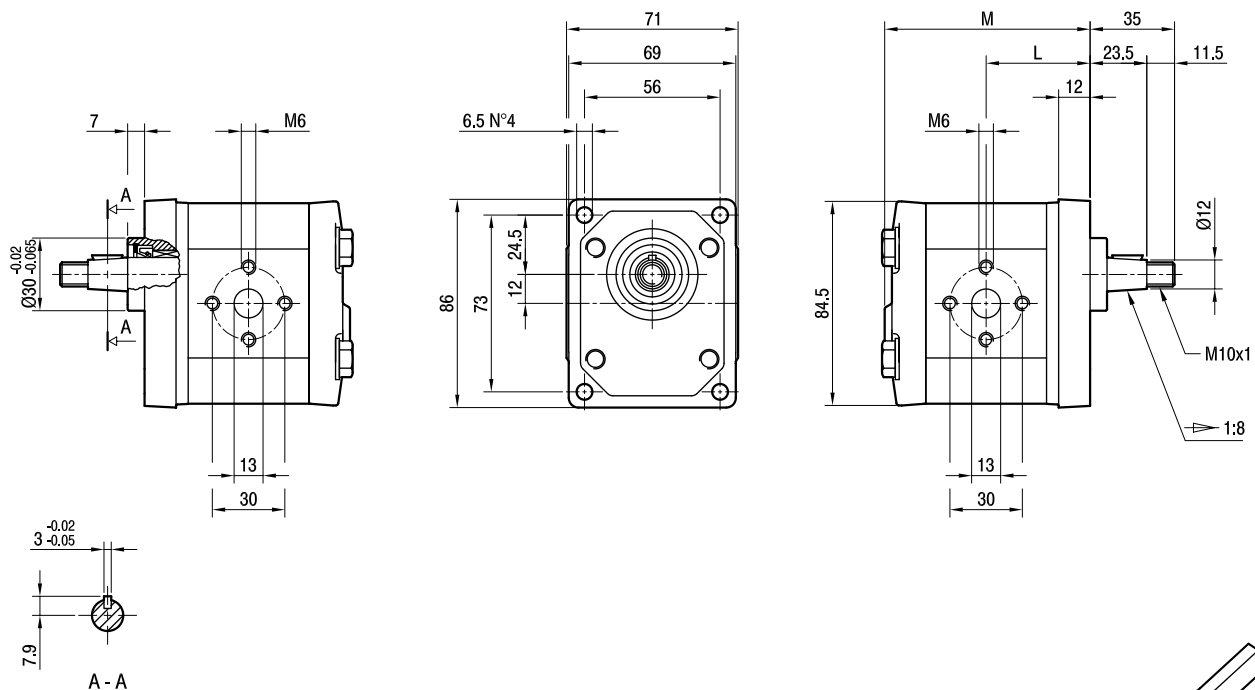
Parti accessorie a corredo della pompa standard: linguetta a disco (codice 522054), dado M10x1 (codice 523015), rosetta elastica spaccata (codice 523004).
 Porte standard: filetti M6 profondità utile 13 mm.

Pump with support bearing radial loads (RA option).

Accessories supplied with the standard pump: woodruff key (code 522054), M10x1 exagonal nut (code 523015), washer (code 523004).
 Standard ports: M6 threads depth 13 mm.

MANDATA
OUTLET

ASPIRAZIONE
INLET



| TIPO TYPE | CILINDRATA DISPLACEMENT | PORTATA a 1500 giri/min FLOW at 1500 rev/min | PRESSIONI MASSIME MAX PRESSURE | | | VELOCITÀ MASSIMA MAX SPEED | DIMENSIONI DIMENSIONS | |
|--------------|--|---|-----------------------------------|----------------|----------------|-------------------------------|--------------------------|-----|
| | | | P ₁ | P ₂ | P ₃ | | M | N |
| | cm ³ /giro (cm ³ /rev) | litri/min (litres/min) | bar | bar | bar | giri/min (rpm) | mm | mm |
| GHP1-D-2-RA | 1,4 | 2,0 | 270 | 290 | 310 | 6000 | 40 | 79 |
| GHP1-D-3-RA | 2,1 | 2,9 | 270 | 290 | 310 | 6000 | 41 | 81 |
| GHP1-D-4-RA | 2,8 | 3,9 | 270 | 290 | 310 | 5000 | 42 | 83 |
| GHP1-D-5-RA | 3,5 | 4,9 | 270 | 290 | 310 | 5000 | 43 | 85 |
| GHP1-D-6-RA | 4,1 | 5,9 | 270 | 290 | 310 | 4000 | 44 | 87 |
| GHP1-D-7-RA | 5,2 | 7,4 | 260 | 275 | 290 | 4000 | 45,5 | 90 |
| GHP1-D-9-RA | 6,2 | 8,8 | 260 | 275 | 290 | 3800 | 47 | 93 |
| GHP1-D-11-RA | 7,6 | 10,8 | 230 | 245 | 260 | 3200 | 49 | 97 |
| GHP1-D-13-RA | 9,3 | 13,3 | 210 | 225 | 240 | 2600 | 51,5 | 102 |
| GHP1-D-16-RA | 11,0 | 15,7 | 200 | 215 | 230 | 2200 | 54 | 107 |
| GHP1-D-20-RA | 13,8 | 19,7 | 180 | 195 | 210 | 1800 | 58 | 115 |